



COMMERCIAL & INDUSTRIAL HVAC EQUIPMENT

General Information: Fresh Air Intake Hoods

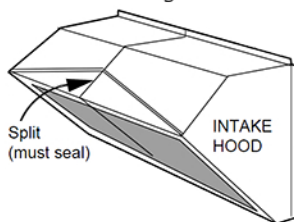
Titan Air offers multiple styles of fresh air intake hoods for use with various applications. Intake hoods are manufactured to the highest level of quality and are typically shipped loose for field installation. See **Titan Air Catalog** for Intake Hood dimensions and weights based on Titan Air model #.

Titan Air Intake Hood Standard Features

- 16 gauge steel sheet metal construction
-Finishes include G-90, painted, two-part epoxy, and Heresite coating
- 1" X 1" Bird Screen

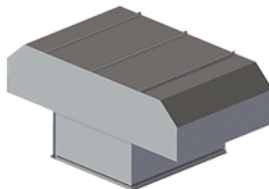
Installation Overview

Titan Air intake hoods are dimensioned based on the size of the HVAC equipment that is specified. As seen in the diagram below, hoods for units TA-233 through TA-242, and large custom units will have 2 piece hoods which must be assembled and sealed in the field. Intake hoods require support to the "Face" of the hood as seen at the bottom of the page in the Hood/Filter Combination diagram. See OSM Manual for more information.



Vertical or Mushroom Hood

This style of hood is commonly used for indoor mounted, horizontal configuration air handlers where the fresh air must be brought in through the roof versus through a building side wall. This intake hood has 1 inch by 1 inch bird screen to prevent birds and large objects from entering the intake of the air handler. This style of hood typically is mounted on a roof curb.

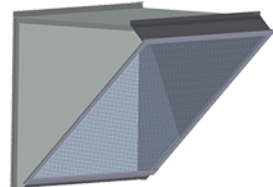


Titan Air Product Lines

- 100% Air Makeup Units
- Swimming Pool Units
- AR/80 - Air Recirculation
- VAV Make up Air Units
- Cooling Units & Modules
- Custom Equipment & Controls
- Direct & Indirect Fired, Electric, Hot Water, and Steam Heating
- Direct Evaporative, DX, and Chilled Water Cooling

45 Degree Hood

This style of intake hood is most commonly used for outdoor mounted, horizontal configuration air handlers. This intake hood has 1 inch by 1 inch bird screen mounted in the hood face to prevent birds and large objects from entering the intake of the air handler. A variation of this type of hood is the **hood/filter combination hood**. This is a same style hood with the added feature of having cleanable filters mounted in the face of the hood.

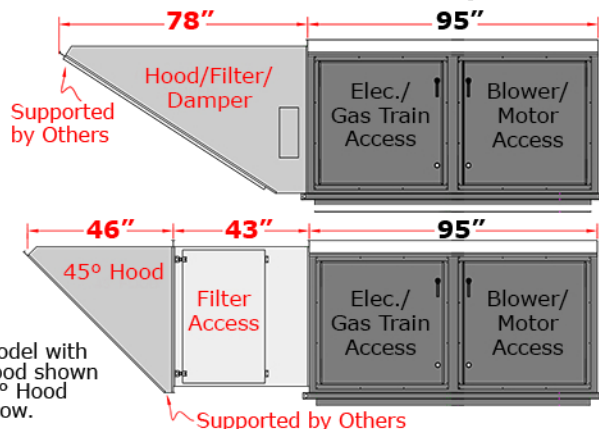


Full Turndown Hood

This style of hood is also used for horizontal configuration units and is commonly used for installations where the air handler intake is facing West or when the intake to the air handler is located high off the ground or roof. This style hood helps keep driving rain or high winds from blowing directly into the unit which can adversely affect the operation of the unit and/or allow rain or snow to get in the building. This hood is used in both outdoor or indoor mounted air handlers. This intake hood has 1 inch by 1 inch bird screen to prevent birds and large objects from entering the intake of the air handler. **This hood is available with or without louvers.**



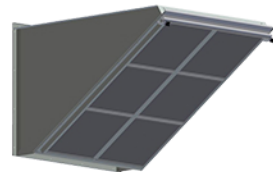
Hood Filter Combo and 45° Hood Comparison



TA-125 model with Combo Hood shown above, 45° Hood shown below.

Hood Filter Combo

This hood is similar to the 45 degree hood but has the intake air filters built into the hood. This hood style results in lower overall cost and a smaller equipment footprint.



Installation labor is also less than installing separate hood and filter banks. Due to the placement of the filters being near the intake, MERV type filters cannot be utilized due to possible moisture damage which leaves cleanable filters as the standard configuration. Also, due to the weight of the Filter Combo Hood, this configuration may not be available on larger equipment sizes. Generally it is limited to use in single blower units.