



COMMERCIAL & INDUSTRIAL HVAC EQUIPMENT

General Information: Discharge Diffusers

Titan Air Product Lines

- 100% Air Makeup Units
- Swimming Pool Units
- AR/80 - Air Recirculation
- VAV Make up Air Units
- Cooling Units & Modules
- Custom Equipment & Controls
- Direct & Indirect Fired, Electric, Hot Water, and Steam Heating
- Direct Evaporative, DX, and Chilled Water Cooling

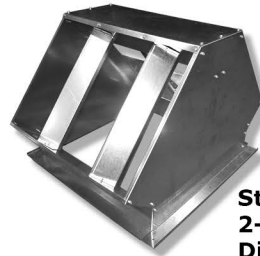
Titan Air offers numerous discharge diffuser options sized for specific model #s to ensure that the needs of your project will be met.

Titan Air Discharge Diffuser Standard Features

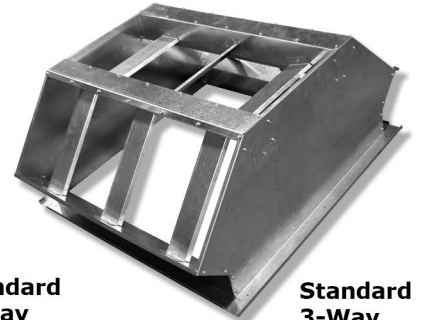
- 16 gauge steel sheet metal construction with 18 gauge blades
- Finishes include G-90 galvanized, painted, two-part epoxy, and Heresite coating
- *Painted diffusers have G-90 blades*



**Standard
4-Way Box
Diffuser**



**Standard
2-Way
Diffuser**



**Standard
3-Way
Diffuser**

Discharge Diffuser Overview and Installation

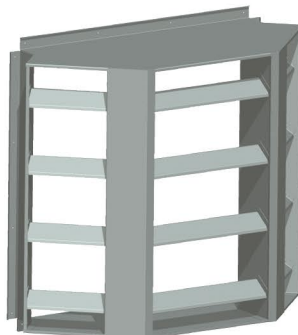
Discharge diffusers are shipped loose for field installation. The directional blades supplied with each diffuser are to be adjusted at the jobsite to direct the air where needed and then permanently fastened. Ideally diffusers should be mounted at least 3 equivalent duct diameters away from the air handler. It is important for the installer to adequately support each diffuser.

Types of Standard Diffusers Available



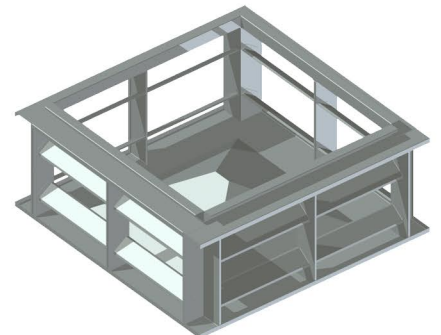
2-Way Diffuser

2-Way diffusers are typically used for units with **horizontal** discharge.



3-Way Diffuser

3-Way diffusers are typically used for units with **horizontal** discharge.



4-Way Box Type Diffuser

Box Type Diffusers are typically used for down discharge, roof top mounted air handlers.

See **Titan Air Catalog** for discharge diffuser dimensions and weights based on Titan Air model #.